



# GAT MONTHLY MEMBERSHIP PROGRESS REPORT

Results as of: 5/31/2021

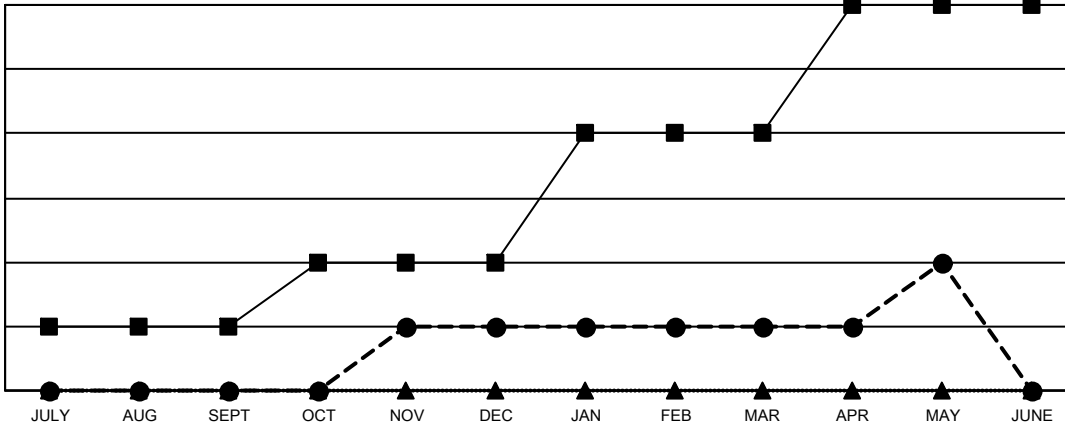
Multiple District 31

LOCATION: NORTH CAROLINA

Clubs			
RESULTS FOR 2020-2021			
QUARTER	NEW CLUB GOAL	NEW CLUBS	DROPPED CLUBS
JULY/AUG/SEPT	1	0	3
OCT/NOV/DEC	1	1	0
JAN/FEB/MAR	2	0	6
APR/MAY/JUNE	2	1	0

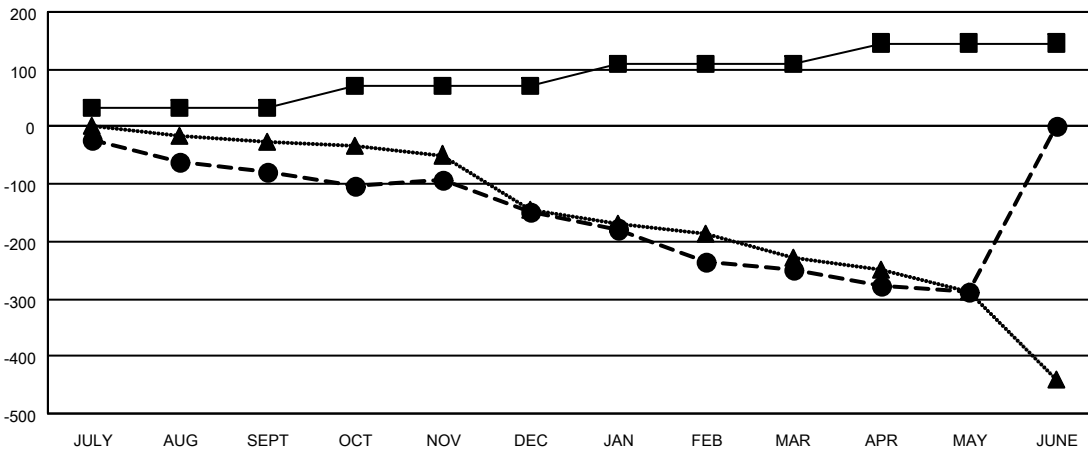
Members			
RESULTS FOR 2020-2021			
QUARTER	MEMBER GROWTH NET GOAL	MEMBER GROWTH ACTUAL	DROPPED MEMBERS ACTUAL (including transfers)
JULY/AUG/SEPT	32	88	149
OCT/NOV/DEC	40	99	161
JAN/FEB/MAR	38	84	161
APR/MAY/JUNE	36	92	122

GOALS AND ACTUAL NEW CLUBS CUMULATIVE



- - CURRENT YEAR GOALS FOR NEW CLUBS
- - CURRENT YEAR ACTUAL NEW CLUBS
- ▲ - LAST YEAR ACTUAL NEW CLUBS

GOALS AND ACTUAL MEMBERS CUMULATIVE



- - MEMBER GROWTH NET GOAL
- - MEMBER GROWTH ACTUAL
- ▲ - LAST YEAR MEMBERSHIP ACTUAL

DROPPED CLUBS: 9	
<u>DROPPED MEMBERS</u>	
DECEASED	117
CLUB CANCELLED	43
OTHER	433
<b>TOTAL</b>	<b>593</b>

96 CLUBS OF 274 ADDED 1 OR MORE NEW MEMBERS

<u>GENDER DISTRIBUTION</u>	
MALE	3,407 (68.02%)
FEMALE	1,602 (31.98%)

[CLICK HERE FOR CUMULATIVE MEMBERSHIP DATA](#)

TOTAL FAMILY UNIT MEMBERS	1,123
FAMILY MEMBERS PAYING HALF DUES	576